

To print: Select File and then Print from your browser 's menu.

Low-power Bluetooth module handles single, dual modes

Posted:16 Feb 2010

From Nordic Semiconductor comes the Insight SiP ISP091201, a completely self-contained [Bluetooth](#) low-energy SiP module that includes the company's MicroBlue nRF8001 connectivity-on-chip solution, integrating [radio](#), [baseband](#) and [software](#) stack plus an integrated antenna, 16MHz crystal and 15 supporting passive components.

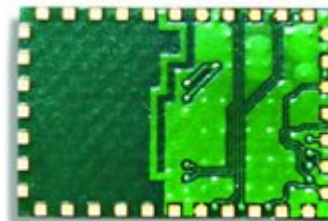
The module measures just 8mm x 12mm x 1.4mm, it is also designed to be fully compliant with FCC and CE EMC requirements and requires no other external supporting components beyond an inexpensive external 8bit microcontroller (from any vendor and used to run the upper profile and application layers of the Bluetooth low energy stack) and on-board 3V power source.

The module is housed in a QFN, LGA package and is miniaturized enough to fit into highly space constrained applications such as watches, health and fitness sensors, remote controls and key fob-style proximity detectors.

The Bluetooth low-energy, part of Bluetooth Version 4.0, specifies two types of implementation—single mode and dual mode. Single mode chips consume only a fraction of the power of classic Bluetooth, allowing the short-range wireless standard to extend to coin cell battery applications for the first time.

Because Bluetooth low energy wireless technology is an interoperable standard, the ISP091201 SiP module will be able to communicate with both single mode Bluetooth low energy chips from other manufacturers, and dual mode Bluetooth low energy chips that are likely to become a de facto feature in almost all new Bluetooth-enabled cellphones and computers.

- **Julien Happich**
EE Times Europe



This article was printed from EE Times-Asia located at::

http://www.eetasia.com/ART_8800598326_499488_NP_fa3ebd96.HTM

http://www.eetasia.com/ART_8800598326_499488_NP_fa3ebd96.HTM

[Back to Article](#) | [Back to Home](#)